

HEAT CONTROLLER

**INSTALLATION, OPERATION
& MAINTENANCE MANUAL**

**InverterFlex Series®
Wireless Remote Control for**

B-VFH 12/18/24CA

B-VFH 9/12/18/24/DA

B-VFH 9/12/18/24/UA

Wired Remote Control for

B-VFH 12/18/24CA

B-VFH 9/12/18/24/DA

B-VFH 9/12/18/24/UA

Contents

I. Wired Remote Controller	1
1 Symbols on LCD	1
1.1 Outside View of the Wired Remote Controller	1
1.2 LCD of the Wired Remote Controller	1
2 Buttons	2
2.1 Buttons on the Wired Remote Controller.....	2
2.2 Function of the Buttons	3
3 Operation Instructions	4
3.1 On/Off	4
3.2 Mode Setting	4
3.3 Temperature Setting	4
3.4 Fan Setting	5
3.5 Timer Setting	5
3.6 Swing Setting	7
3.7 Sleep Setting	8
3.8 Turbo Setting	9
3.9 E-heater Setting	10
3.10 Blow Setting	11
3.11 Other Functions	12
4 Installation and Dismantlement	13
4.1 Connection of the Signal Line of the Wired Remote Controller	13
4.2 Installation of the Wired Remote Controller.....	13
4.3 Dismantlement of the Wired Remote Controller.....	15
II. Wireless Remote Controller.....	16
1 Function of Press Buttons	16
2 Guide for General Operation	19
3 Guide for Optional Operation	19

User Notice

- Never install the wired remote controller in moist circumstances or expose it directly to sunlight.
- Never beat, throw, or frequently disassemble the wired remote controller or the wireless remote controller.
- Never operate the wired remote controller or the wireless remote controller with wet hands.



Please read the manual carefully before using and installing this product.

I. Wired Remote Controller

1 Symbols on LCD

1.1 Outside View of the Wired Remote Controller

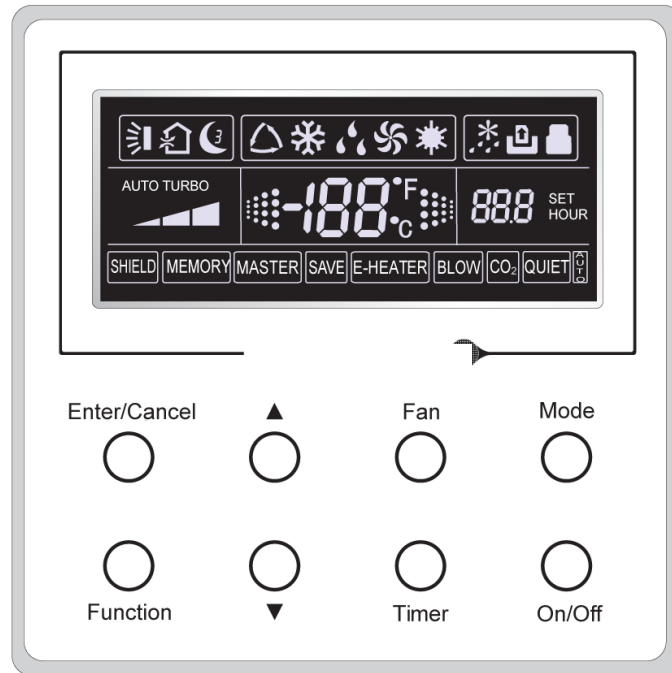


Fig. 1 Outside View of the Wired Remote Controller

1.2 LCD of the Wired Remote Controller

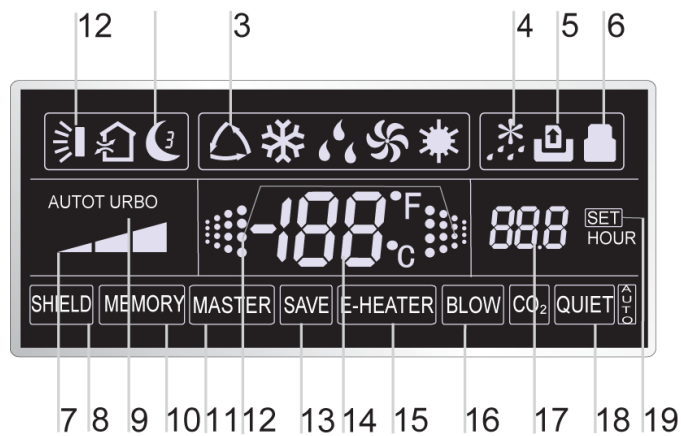


Fig. 2 LCD of the Wired Remote Controller

Table 1

No.	Symbols	Description
1		Swing function.
2		Sleep function (Only sleep 1).
3		Running modes of the indoor unit (Cooling, Dry, Fan and Heating).
4		Defrosting function for the outdoor unit.
5		Gate-control function (this function is yet unavailable for this unit).
6		Lock function.
7		High, middle, low or auto fan speed of the indoor unit.
8		Shield functions (buttons, temperature, On/Off or Mode is shielded by the remote monitor).
9		Turbo function.
10		Memory function (The indoor unit resumes the original setting state after power failure and then power recovery).
11		Master wired remote controller (this function is yet unavailable for this unit).
12		It blinks under on state of the unit without operation of any button.
13		Energy-saving function (this function is yet unavailable for this unit).
14		Ambient/preset temperature value.
15		Electric auxiliary heating function.
16		Blow function.
17		Timing value.
18		Quiet function (two types: quiet and auto quiet) (this function is yet unavailable for this unit).
19	SET	It will be displayed under the debugging mode.

2 Buttons

2.1 Buttons on the Wired Remote Controller

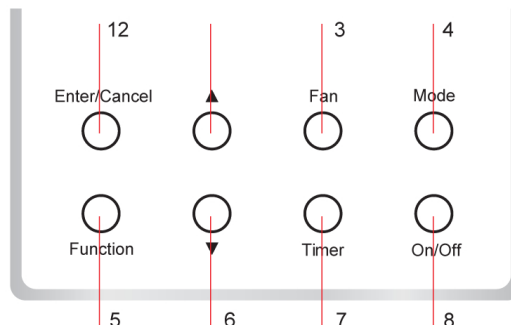




Fig. 3 Buttons on the Wired Remote Controller

Table 2

No.	Name	Function
1	Enter/Cancel	Function selection and cancellation.
2	▲	① Running temperature setting of the indoor unit, range: 60°F - 86°F (16°C - 30°C). ② Timer setting, range:0.5-24 hr.
6	▼	
3	Fan	Setting of the high/middle/low/auto fan speed.
4	Mode	Setting of the Cooling/Heating/Fan/Dry/Auto mode of the indoor unit.
5	Function	Switchover among the functions of Turbo/Save/E-heater/Blow etc.
7	Timer	Timer setting.
8	On/Off	Turn on/off the indoor unit.
4+2	▲+Mode	Press for 5s under off state of the unit to Enter/Cancel the Memory function (If memory is set, indoor unit after power failure and then power recovery will resume the original setting state. If not, the indoor unit is defaulted to be off after power recovery. Memory off is default).
3+6	Fan+▼	By pressing them at the same time under off state of the unit,  will be displayed on the wired remote controller for the cooling only unit, while  will be displayed on the wired remote controller for the cooling and heating unit.
4+6	▲+▼	Upon startup of the unit without malfunction or under off state of the unit,press them at the same time for 5s to enter the lock state, in which case, any other buttons won't respond the press. Repress them for 5s to quit this state.
4+6	Mode+▼	Under OFF state, the Celsius and Fahrenheit scales can be switched by pressing "Mode" and "▼" for five seconds.
5+7	Function+Timer	Under OFF state, it is available to go to the commissioning status by pressing "Function" and "Timer" for five seconds, and let "00" displayed on the temperature display area by pressing "Mode", then adjust the options which are shown on the timer area by pressing "▲" and "▼". There are four options, as follows: ① Indoor ambient temperature is sensed by the return air temperature sensor (01 displayed on the timer area). ② Indoor ambient temperature is sensed by the wired controller (02 displayed on the timer area). ③ The return air temperature sensor is selected under the cooling, dry, or fan mode; while the wired controller temperature sensor is selected under the heating or auto mode. (03 is displayed on the timer area). ④ The wired controller temperature sensor is selected under the cooling, dry, or fan mode; while the return air temperature sensor is selected under the heating mode. (04 is displayed on the timer display area).
5+7	Function+Timer	Under OFF mode, go to the commissioning status by pressing "Function" and "Timer" for five seconds. Press "Mode" button to until "01" icon is shown at the temperature display area. The setting status will be shown at timer area. Press "▲" and "▼" button to adjust and two options are available: ① Three low levels (01) ; ② Three high levels (02).

3 Operation Instructions

3.1 On/Off

Press On/Off to turn unit on. Pressing once more will turn unit off.

Note: The state shown in Fig. 4 indicates the “Off” state of the unit after power on. The state shown in Fig. 5 indicates the “On” state of the unit after power on.

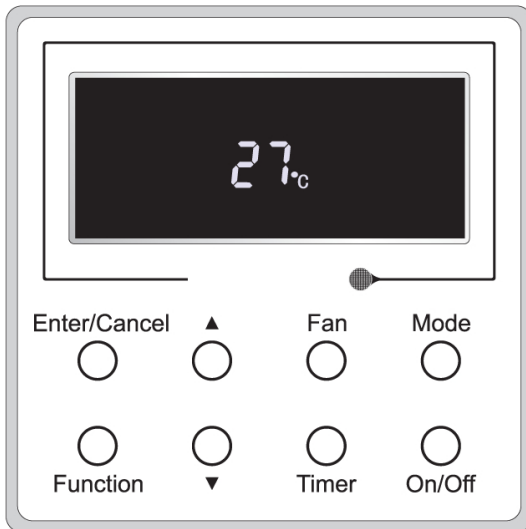


Fig. 4 “Off” State

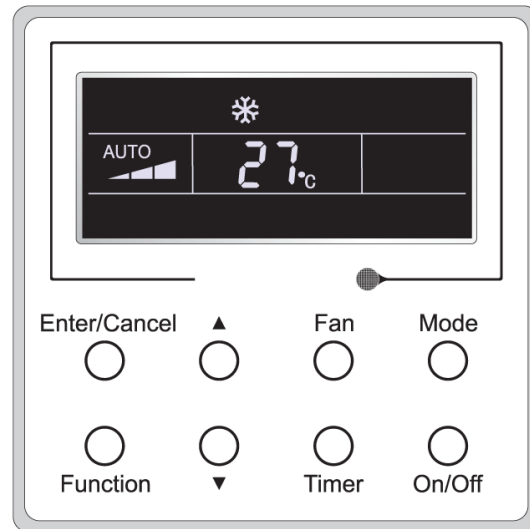
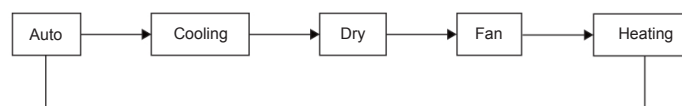


Fig. 5 “On” State



3.2 Mode Setting

Under the “On” state of the unit, press Mode to switch the operation modes as the following sequence: Auto-Cooling-Dry-Fan-Heating.

3.3 Temperature Setting

Press ▲ or ▼ to increase/decrease the preset temperature. When pressing either of them continuously, the temperature will be increased or decreased by 1 every 0.5s, as shown in Fig. 6. In the Cooling, Dry, Fan or Heating mode, the temperature setting range is 60°F~86°F. In the Auto mode, the temperature setting is unadjustable.

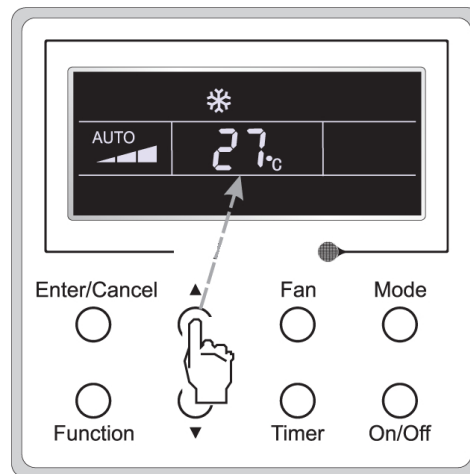


Fig. 6

3.4 Fan Setting

Under the “On”/“Off” state of the unit, press Fan and then fan speed. The indoor unit will change circularly as shown in Fig. 7.

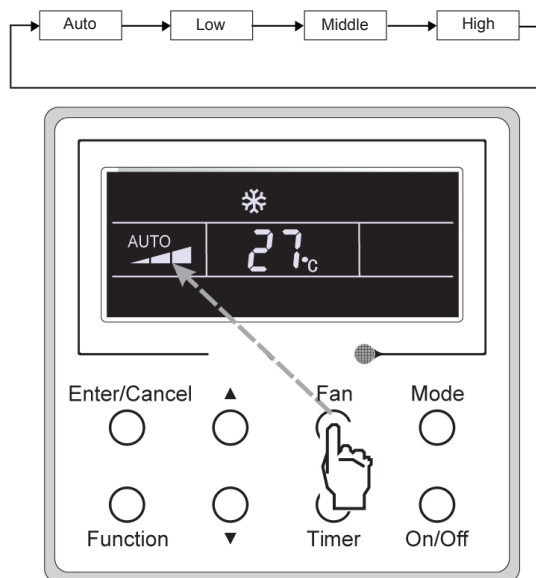


Fig. 7

3.5 Timer Setting

Under the “On”/“Off” state of the unit, press Timer to set timer off/on.

Timer on setting: press Timer. LCD will display “xx.x hour”, with “hour” blinking. Press ▲ or ▼ to adjust the timing value. Press Enter/Cancel to confirm the setting.

Timer off setting: press Timer, if LCD won't display xx.x hour, it means the timer setting is canceled.

Timer off setting under the “On” state of the unit is shown as Fig. 8.

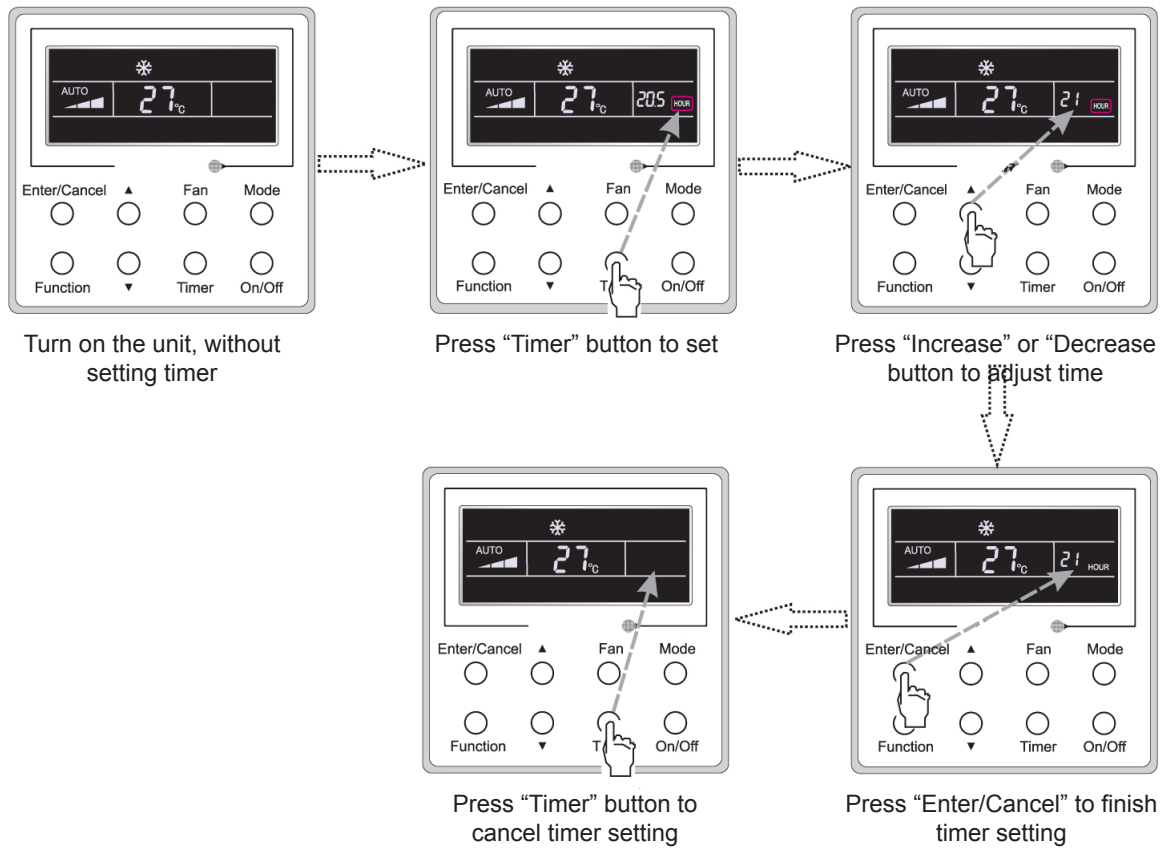




Fig. 8 Timer off Setting under the "On" State of the Unit

Timer range: 0.5-24hr. Every press of ▲ or ▼ will make the set time increased or decreased by 0.5hr. If either of them is pressed continuously, the set time will increase/ decrease by 0.5hr every 0.5s.

3.6 Swing Setting

Swing On: Press Function under on state of the unit to activate the swing function. In this case,  will blink. After that, press Enter/Cancel to make a confirmation Swing Off: When the Swing function is on, press Function to enter the Swing setting interface, with  blinking. After that, press Enter/Cancel to cancel this function. Swing setting is shown as Fig. 9.

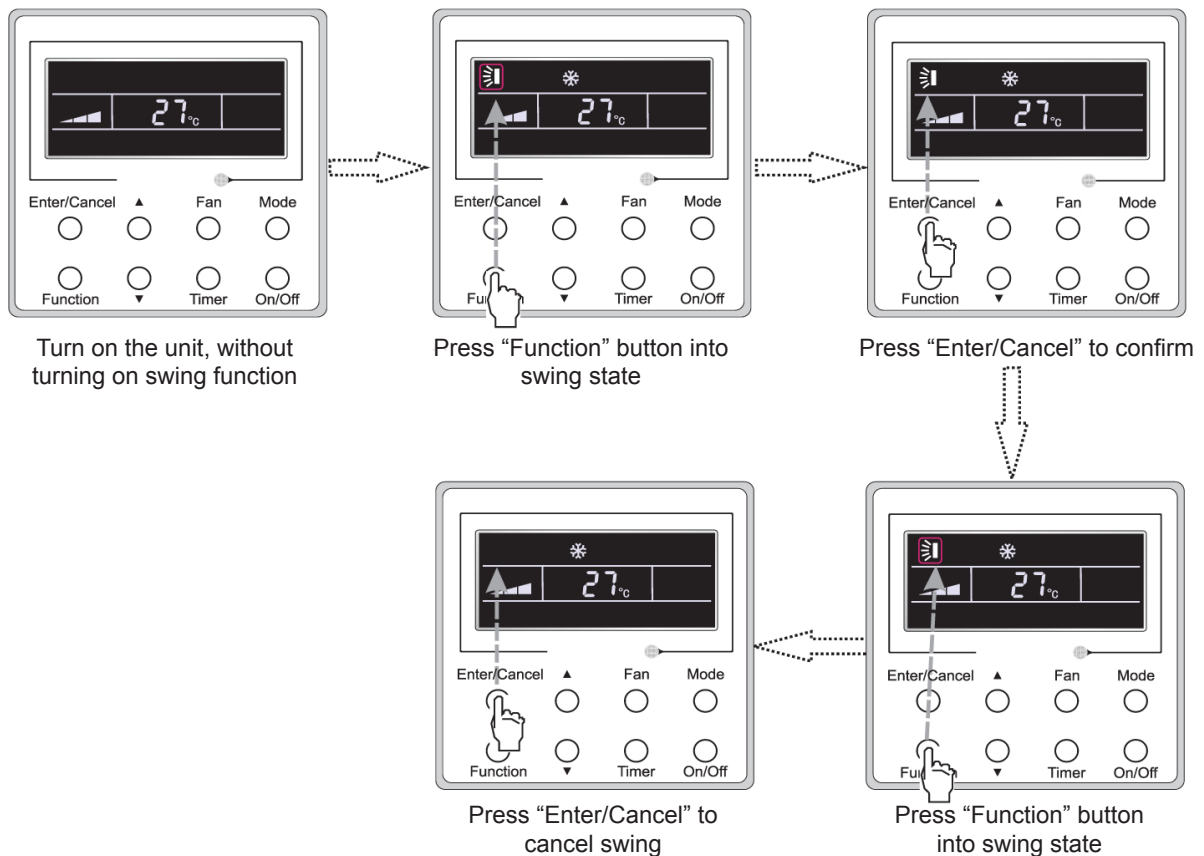


Fig. 9 Swing Setting

Notes:

- ① Sleep, Turbo or Blow setting is the same as the Swing setting.
- ② After adjusting the setting press the key "Enter/Cancel" to go back to the setting status or quit automatically five seconds later.

3.7 Sleep Setting

Sleep on: With unit on press Function to illuminate Sleep setting interface. Press Enter/Cancel to confirm the setting.

Sleep off: When the Sleep function is activated, press Function to enter the Sleep setting interface. After that, press Enter/Cancel to disable this function.

In the Cooling or Dry mode, the temperature will increase by 2°F -(1°C) after the unit runs under Sleep 1 for 1 hr and 2°F -(1°C) after another 1 hr. After that, the unit will run at this temperature.

In the Heating mode, the temperature will decrease by 2°F -(1°C) after the unit runs under Sleep 1 for 1 hr and 2°F -(1°C) after another 1 hr. After that, the unit will run at this temperature.

Sleep setting is shown as Fig. 10.

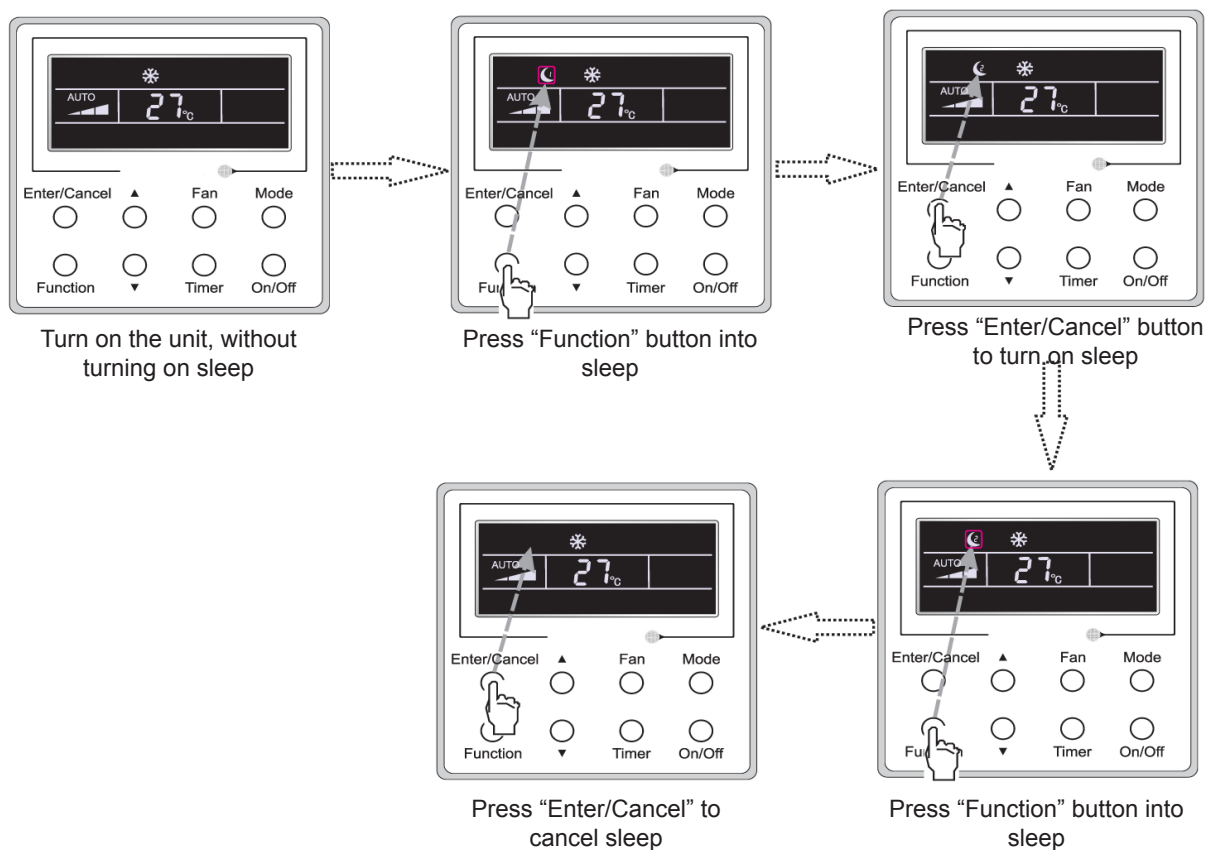


Fig. 10 Sleep Setting

3.8 Turbo Setting

Turbo function: The unit at the high fan speed can realize quick cooling or heating so that the room temperature can quickly approach the setting value.

In the Cooling or Heating mode, press Function till the unit enters the Turbo setting interface and then press Enter/Cancel to confirm the setting.

When the Turbo function is activated, press Function to enter the Turbo setting interface and then press Enter/Cancel to cancel this function.

Turbo function setting is as shown in Fig. 11

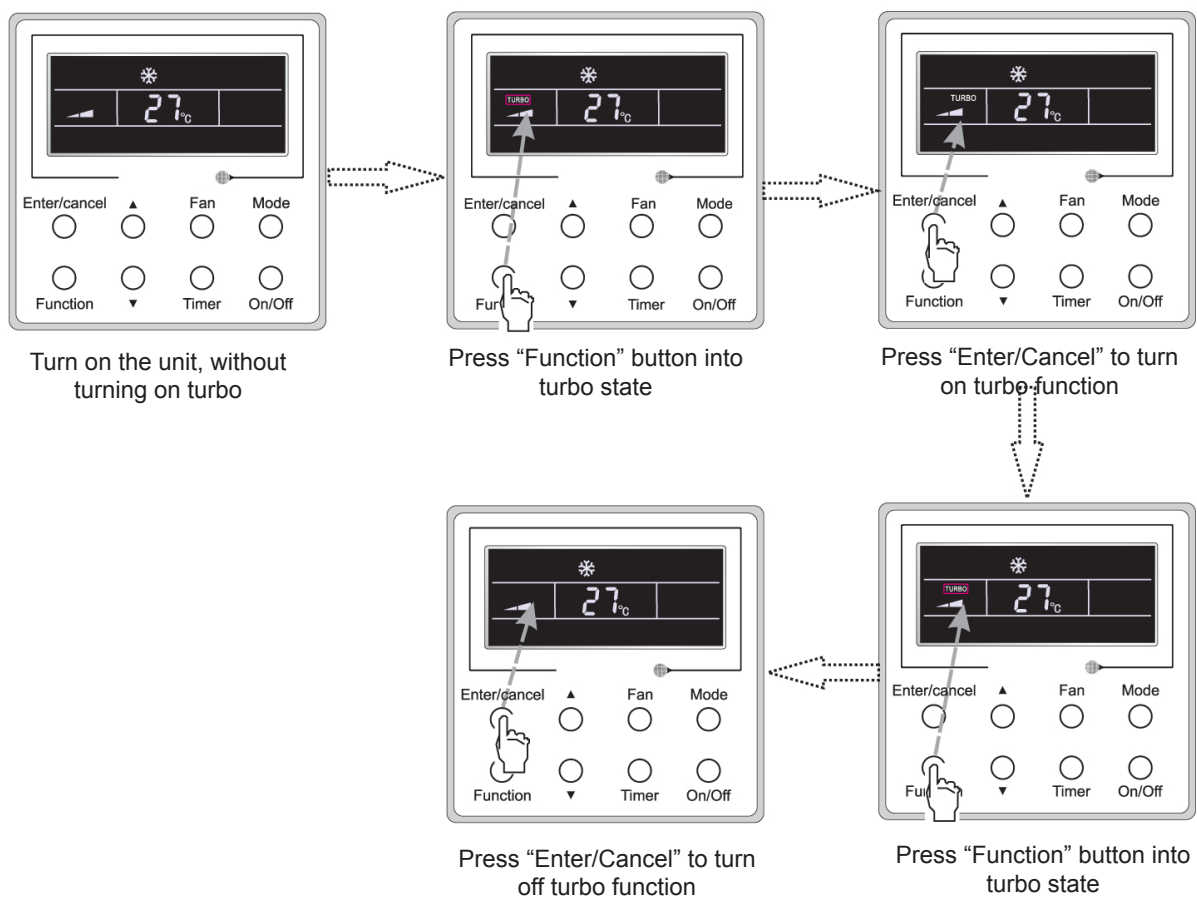


Fig. 11 Turbo Setting

3.9 E-heater Setting

E-heater (auxiliary electric heating function): In the Heating mode, E-heater is allowed to be turned on for improvement of efficiency.

Once the wired remote controller or the remote controller enters the Heating mode, this function will be turned on automatically.

Press Function in the Heating mode to enter the E-heater setting interface and then press Enter/Cancel to cancel this function.

Press Function to enter the E-heater setting interface, if the E-heater function is not activated, and then press Enter/Cancel to turn it on.

The setting of this function is shown as Fig. 12 below:

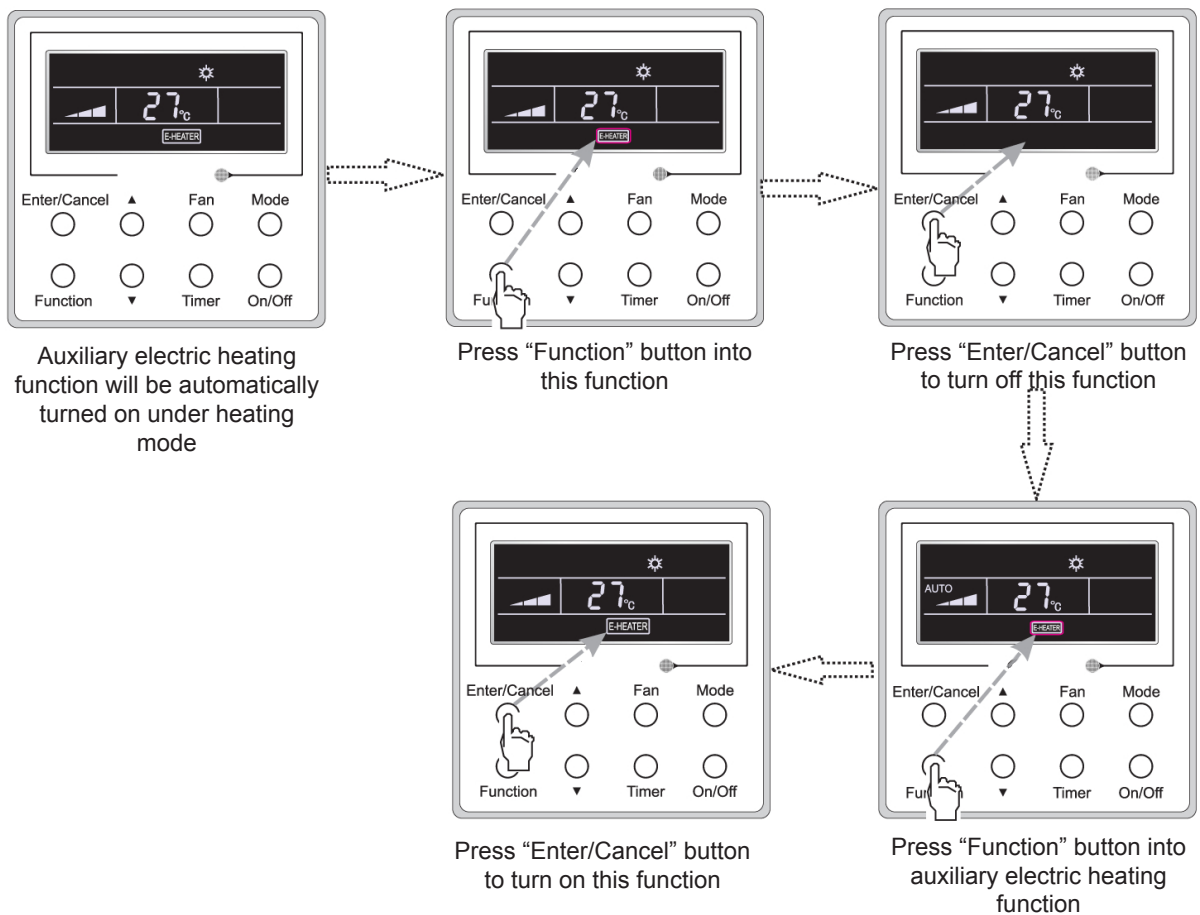


Fig. 12 E-heater Setting

3.10 Blow Setting

Blow function: After the unit is turned off, the water in evaporator of indoor unit will be automatically evaporated to avoid mildew.

In the Cooling or Dry mode, press Function till the unit enters the Blow setting interface and then press Enter/Cancel to activate this function.

When the Blow function is activated, press Function to the Blow setting interface and then press Enter/Cancel to cancel this function.

Blow function setting is as shown in Fig. 13

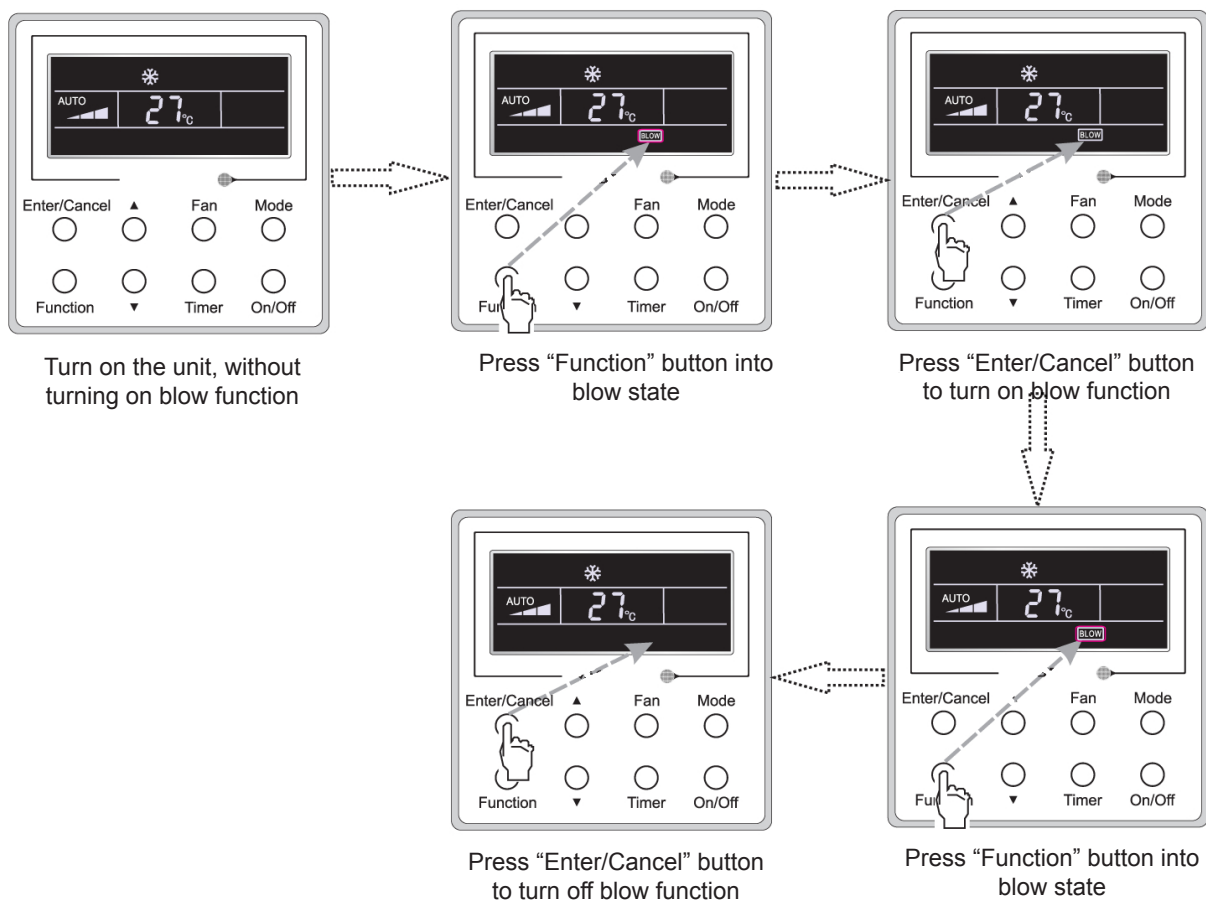



Fig. 13 Blow Setting

Notes:

- ① When the Blow function is activated, if turning off the unit by pressing On/Off or by the remote controller, the indoor fan will run at the low fan speed for 2 min, with "BLOW" displayed on the LCD. While, if the Blow function is deactivated, the indoor fan will be turned off directly.
- ② Blow function is unavailable in the Fan or Heating mode.

3.11 Other Functions

(1). Lock

Upon startup of the unit without malfunction or under the “Off” state of the unit, press ▲ and ▼ at the same time for 5s till the wired remote controller enters the Lock function. In this case, LCD displays . After that, depress both buttons at the same time for 5s to quit this function. Under the Lock state, any other button press will get no response.

(2). Memory

Memory switchover: In the “Off” state of the unit, press Mode and ▲ at the same time for 5s to switch memory status between memory on and memory off. When this function is activated, Memory will be displayed. If this function is not set, the unit will be in the “Off” status after power failure and then power recovery.

Memory recovery: If this function has been set for the wired remote controller, the wired remote controller after power failure will resume its original running state upon power recovery. Memory contents: On/Off, Mode, set temperature, set fan speed and Lock function.

(3). Selection of the Temperature Sensor

Under OFF state of the unit, press both “Function” and “Timer” for five seconds to go the commissioning status. Under this status, adjust the display in the temperature display area to “00” through the “Mode” button, and then adjust the option of the temperature sensor in the timer display area through the button ▲ or ▼.

- ① Indoor ambient temperature is sensed at the return air inlet (01 in the timer display area).
- ② Indoor ambient temperature is sensed at the wired controller(02 in the timer display area).
- ③ Select the temperature sensor at the return air inlet for the cooling, dry and fan modes. Select the temperature sensor at the wired controller for the heating and auto modes.(03 in the timer display area).
- ④ Select the temperature sensor at the wired controller for the cooling, dry and fan modes, and select the temperature sensor at the return air inlet for the heating mode and auto modes (04 displayed in the timer display area).

The factory default setting is ③.

After setting press “Enter/Cancel” to make a confirmation and leave this setting status.

Pressing the button “On/Off” also can quit this commissioning status but the set data won’t be memorized.

Under the commissioning status, if there is no operation in 20 seconds after the last button press, it will revert back to the previous state without memorizing the current data.

(4). Selection of the Fan Speed

In OFF state of the unit, press the buttons “Function” and “Timer” for five seconds to go to the commissioning status, and then adjust the display in the temperature display area to 01 through the “Mode” button and adjust the setting of the fan speed, which has two options.

01: Three low fan speeds; 02: Three high fan speeds

After the setting, press “Enter/Cancel” to make a confirmation and leave this setting status. Pressing the button “On/Off” also can stop this commissioning status but the set data won’t be memorized. Under the commissioning status, if there is no operation in 20 seconds after the last button press, it will revert back to the previous state without memorizing the current data

4 Installation and Dismantlement

4.1 Connection of the Signal Line of the Wired Remote Controller

- Open the cover of the electric control box of the indoor unit.
- Feed the single line of the wired remote controller through the rubber ring.
- Connect the signal line of the wired remote controller to the 4-pin socket of the indoor unit PCB.
- Tighten the signal wire with ties.
- The communication distance between the main board and the wired remote controller can be up to 65 ft. (the standard distance is 26 ft.)

4.2 Installation of the Wired Remote Controller

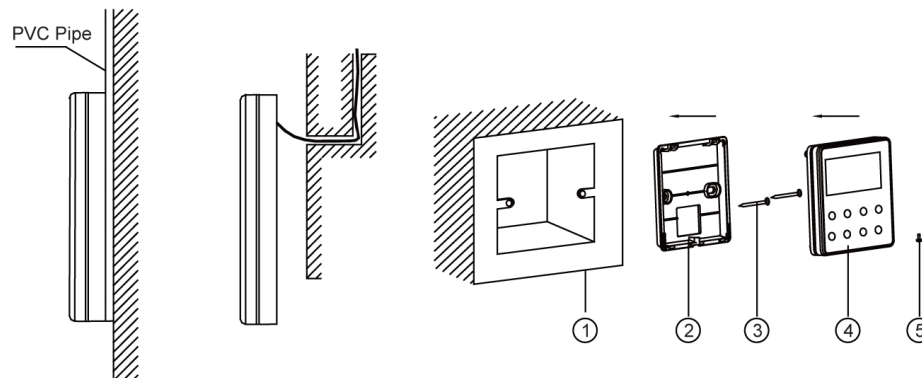


Fig. 14 Accessories for the Installation of the Wired Remote Controller

Table 3

No.	1	2	3	4	5
Name	Socket box embedded in the wall	Base plate of the Wired Remote Controller	Screw M4X25	Front Panel of the Wired Remote Controller	Screw ST2.9X6

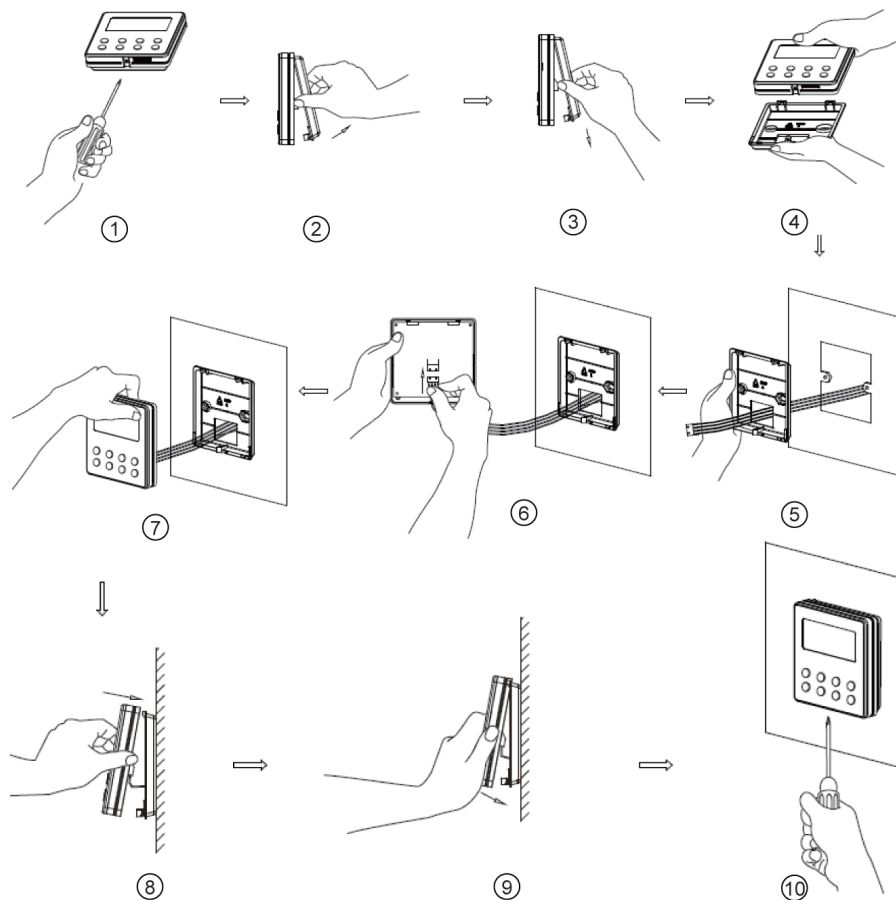


Fig. 15

Fig. 15 shows the installation steps of the wired remote controller, but there are some issues that need your attention.

- (1). Prior to the installation, please first cut off the power supply of the wire buried in the installation hole, that is, no operation is allowed with electricity during the whole installation.
- (2). Pull out the four-core twisted pair line from the installation holes and then let it go through the rectangular hole behind the baseplate of the wired remote controller.
- (3). Stick the baseplate of the wired remote controller to the wall over the installation hole and then fix it with screws M4X25.
- (4). Insert the four-core twisted pair line into the slot of the wired remote controller and then snap the front panel and the baseplate of the wired remote controller together.
- (5). Finally, fix the front panel and the baseplate of the wired remote controller tightly by screws ST2.9X6.



Please pay special attention to the following during the connection to avoid the malfunction of the air conditioning unit due to electromagnetic interference.

- ① Separate the signal and communication lines of the wired remote controller from the power cord and connection lines between the indoor and outdoor unit, with a minimum interval of 8", otherwise the communication of the unit will probably work abnormally.
- ② If the air conditioning unit is installed where it is vulnerable to electromagnetic interference, the signal and communication lines of the wired remote controller must be the shielded twisted pair lines.

4.3 Dismantling of the Wired Remote Controller

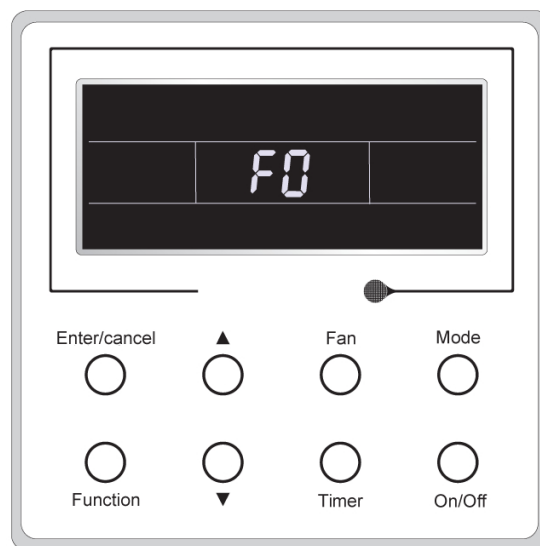
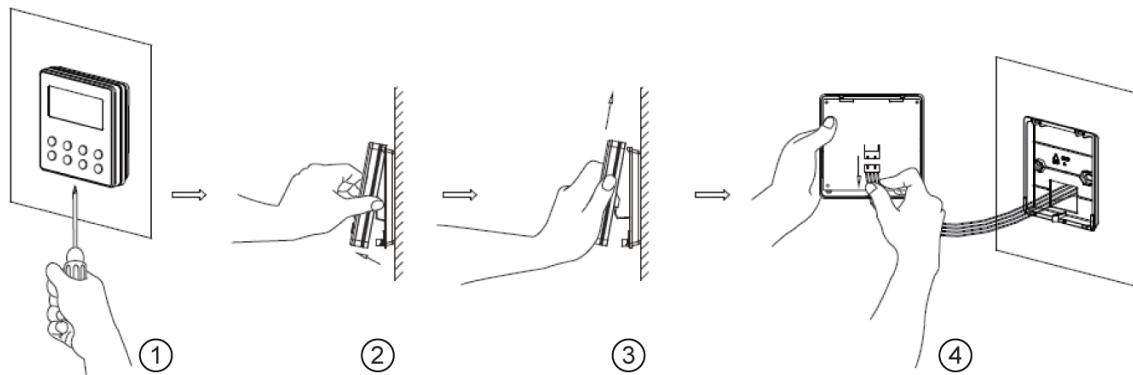


Fig. 16

II. Wireless Remote Controller

Notes :

- ① Be sure that there are no obstructions between the receiver and the remote controller.
- ② Do not drop or throw the remote controller.
- ③ Do not allow any liquid into the remote controller or expose the remote controller to direct sunlight or any place that is very hot.
- ④ This is a general use remote controller. Some functions are not available on this unit.

1 Function of Press Buttons



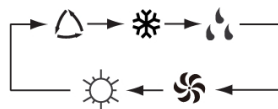
Fig. 17






1) ON/OFF ()

Press this button to turn on/off the unit. The sleep function will be cancelled but the preset time still remains.

2) MODE

Auto, Cool, Dry, Fan, Heat modes can be selected circularly by pressing this button. Auto mode is the default after power on. Under Auto mode, the temperature will not be displayed. Under Heat mode, the initial value is 82°F (28°C) Under other modes, the initial value is 77°F (25°C).



-  Auto
-  Cool
-  Dry
-  Fan
-  Heat (Only for the cooling and heating unit)

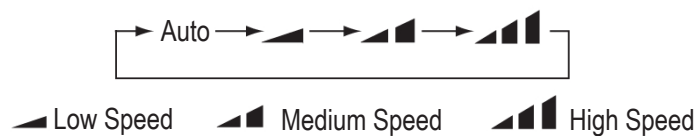
3) SLEEP

Sleep On and Sleep Off can be selected by pressing this button. After powered on, the default is Sleep Off. After the unit is turned off, the Sleep function is canceled. When the sleep function is already set, the symbol ☾ will be displayed. And at this time, timer can be adjusted.

Under Fan and Auto modes, this Function is not available.

4) FAN

Auto, Low, Medium, or High fan speed can circularly selected by pressing this button. After powered on, the default is Auto speed. Under Dehumidifying mode, only Low fan speed is available.



5) CLOCK

The clock can be set up by pressing this button, with the symbol ☉ displayed and blinking. In such a case, pressing + or - within 5 seconds will adjust the value. If the button is pressed down for more than 2 seconds, the value on ten's place will increase by 1 in every 0.5 seconds. After that, depressing this button and then symbol ☉ stops blinking, which indicates the setting is made successfully. After powered on, the default value is 12:00 with ☉ displayed. Once the symbol ☉ is displayed, the current time is the Clock value; otherwise it is the Timer value.

6) LIGHT

Light On and Light Off can be set by pressing this button when the unit is at On or Off status. After powered on, the default is Light On.

7)TURBO

In Cool or Heat mode, pressing this button can activate or deactivate this function. When this function is on, its symbol will be displayed. Any change of either mode or fan speed will make this function cancelled automatically.

8) X-FAN

Pressing X -FAN button in COOL or DRY mode, the icon ⚙ is displayed and the indoor fan will continue operation for 10 minutes in order to dry the indoor unit even though you have turned off the unit. After energizing, X-FAN OFF is default. X-FAN is not available in AUTO, FAN or HEAT mode.


9) —

The preset temperature can be decreased by pressing this button. If the button is pressed down for more than 2 seconds, the temperature will be decreased quickly until it is released, with °F (°C) displayed all the time. Under Auto mode, the temperature adjustment is unavailable.

10) +

The preset temperature can be increased by pressing this button. If the button is pressed down for more than 2 seconds, the temperature will be increased quickly until it is released, with °F (°C) displayed all the time. Under Auto mode, the temperature adjustment is unavailable. The setting range is 61-86°F (16-30°C).



11) TEMP

Indoor/outdoor temp. can be decided by pressing this button which temperature will be displayed. When the indoor unit is powered on, the indoor set temperature will be displayed. If the status is changed to , the indoor ambient temperature will be displayed. However, the indoor set temperature will be displayed again when the controller receives other remote control signals. Without setting this function, the default is the indoor set temperature.

12) SWING UP/DOWN ()

The swing angle which circularly changes as below can be selected by pressing this button:



This kind of remote controller is universal. And the three swing statuses of  are the same as that of .

If the swing function is deactivated when the air guide louver swings up and down, it will stop at the current position.

 indicates that the air guide louver swings up and down among all five positions

13) AIR ()

AIR ON or Air OFF can be selected by pressing this button.

14) TIMER ON

“ON” will be displayed and blink for 5 seconds by pressing this button. Quickly adjust the time by pressing + or - within 5 seconds. Each press will make the time increase or decrease by 1 minute. If the button is pressed down for more than 2 seconds, the time will be changed quickly in such a way: first the value on the one’s place is changed and then the value on the ten’s place. Once Timer ON has been set, it can be cancelled by pressing it again. Before setting, please adjust the CLOCK to the current actual time.

15) TIMER OFF

TIMER OFF can be activated by pressing this button, with “OFF” blinking. The method of setting is the same as that for TIMER ON.


16) HEALTH ()

This function can be activated or deactivated by pressing this button. After the unit is turned on, the default is HEALTH ON.

17) I FEEL

This function can be activated by pressing this button and canceled by another press. When this function is on, the I FEEL information will be sent out in 200 ms after each operation on the controller and the remote controller will send the temperature information to the main controller every 10 minutes.

2 Guide for General Operation

- a. After powered on, press ON/OFF and then the unit will start to run. (Note: when powered off, the louver of the main unit will close automatically).
- b. Press MODE to select the desired running mode.
- c. Press + or - to set the desired temperature (it is unnecessary to set the temperature under the AUTO mode).
- d. Press FAN to set the fan speed, Auto, Low, Medium, or High.
- e. Press  to select the swing angle.

3 Guide for Optional Operation

a. About X-FAN

This function indicates that moisture in the evaporator of the indoor unit will be dried after the unit is stopped to avoid mold.

① X-FAN ON: Press the ON/OFF button to turn off the unit, the indoor fan will continue running for about another 10 minutes at the low speed. In this case, the indoor fan can be stopped directly by pressing the X-FAN button.

② X-FAN OFF: When press the ON/OFF button to turn off the unit, the whole unit will be stopped completely.

b. AFTERHEAT X-FAN

Under the Heat mode or Auto Heat mode, if the unit is turned off, the compressor and outdoor fan will stop running immediately and the upper and lower guide board will rotate to the horizontal position, while the indoor fan still runs at the low fan speed. Then, 10 seconds later, the unit will stop completely.

c. AUTO RUN

When AUTO RUN is selected, the set temperature will not be displayed on the LCD and the unit will choose the suitable running mode automatically in accordance with the room temperature.

d. About TURBO

If this function is activated, the unit will run at super-high fan speed to cool or heat quickly so that the ambient temperature will approach the preset temperature as soon as possible.

This page is left intentionally blank.

This page is left intentionally blank.

Due to ongoing product improvements, specifications and dimensions are subject to change and correction without notice or incurring obligations. Determining the application and suitability for use of any product is the responsibility of the installer. Additionally, the installer is responsible for verifying dimensional data on the actual product prior to beginning any installation preparations.

Incentive and rebate programs have precise requirements as to product performance and certification. All products meet applicable regulations in effect on date of manufacture; however, certifications are not necessarily granted for the life of a product. Therefore, it is the responsibility of the applicant to determine whether a specific model qualifies for these incentive/rebate programs.

HEAT CONTROLLER

1900 Wellworth Ave., Jackson MI 49203 • Ph. 517-787-2100 • www.heatcontroller.com

A  Company